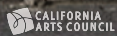




tickets: welga.bpt.me



Our Funders



**SoMa Community
Stabilization Fund**

Our Community Partners

Asian Pacific American Labor Alliance

Migrante SoMa/TL- San Francisco

YOHANA - Youth Organizing Home and Neighborhood
Action of the South of Market Community Action Network
(SOMCAN)



BINDLESTIFF STUDIO is a non-profit artistic hub that provides an affordable, professional, small performing arts venue where new and veteran artists can take creative risks. Anchored by the Filipino American community, Bindlestiff Studio endeavors to educate the public about Filipino American culture and the arts through theatrical presentations, public workshops, concerts, readings, and other events. As the first Filipino American Theater in the nation, Bindlestiff Studio continues to be at the vanguard through the efforts of its artists and community that supports it. Visit Bindlestiff Studio at www.bindlestiffstudio.org.

MANAGING DIRECTOR Oliver Saria
ARTISTIC DIRECTOR Aureen Almario
FACILITY MANAGEMENT Vinay Patel (on behalf of APICC)
HOUSE MANAGER Ed Mabasa
TECHNICAL DIRECTOR Darius Munoz
BOX OFFICE MANAGER Lyle Prijoles
PRODUCTION TEAM LEAD Dave Ragaza
WEBSITE MANAGER/ INTERNET MEDIA OUTREACH Manny Cabrera
GRAPHIC DESIGNER/INTERNET MEDIA MANAGER Conrad Panganiban

BOARD OF DIRECTORS Gemma Mondala (President), Conrad Panganiban, Dave Ragaza, and Oliver Saria

If you are interested in supporting Bindlestiff Studio as a volunteer, committee member, or board member, please contact Oliver Saria at oliver@bindlestiffstudio.org.

Bindlestiff Studio Presents

WELGA

written by Conrad A. Panganiban
directed by Aureen Almario

Cast

Johnny Montalban..... Lorenz Angelo Gonzales
Carmelita Montalban..... Marissa L. Ampon
Maxi Villones..... Ava Tolentino
Fernando Barcenas..... Adisorn Wannaviroj
Vanessa Yuchengco..... Krystle Piamonte
Janae Yuchengco..... Nicole Nutterfield
Pete/Rex Chen..... Aaron Orpilla
Arno Lapid..... Ely Sonny Orquiza
Dallas Basco/Carlos Garcia..... DC Fernandez

Production Team

Aureen Almario, Melanie Elvena, Laura Priscilla Paule,
and Conrad Panganiban

Crew

Playwright
Director
Assistant Director
Set Designer
Technical Director
Light Designer
Costume Designer
Make-up Artist
Music Director
Vocal Coach
Dance Choreographer
Props
Photographer
Videographer
Graphic Designer
Web and Program Designer
House Manager
Box Office Manager

Conrad A. Panganiban
Aureen Almario
Laura Priscilla Paule
Andrea Almario
Darius Munoz
David Ragaza
Joyce Juan Manalo
Alexis Dayers
Josh Icban
Rhoda Gravador
Sammay Dizon
Ava Tong
Rob Suguitan
Willis Lai
Den Legaspi
Conrad Panganiban
Oliver Saria
Lyle Prijoles

Director's Statement

In April this year, the South of Market neighborhood had the privilege to be designated to be the Filipino American Heritage District. How amazing is it to walk the streets of SOMA Pilipinas to sit in the only theater space dedicated to Filipino American performing arts to watch a show about the very people that live in this neighborhood. Wherever you came from, your journey here, may this play shine a light on the resilience and strength of the Filipinos in America.

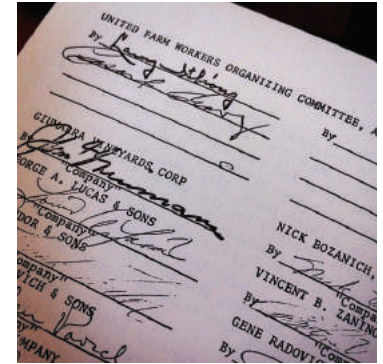
This story and these characters are inspired by the our leaders in the community today and the past, through the eyes of a rebellious youth, Johnny Montalban. Though the story is fictional, it is grounded in our everyday experiences here in SOMA. Conrad Panganiban's characters jump out of the page and they are living breathing people who are heroes in the Filipino American community now. An example of art imitating life but a beautiful reminder that we are the leaders we have been waiting for.

This production is the work of tireless effort of many people at Bindlestiff Studio: managing director Oliver Saria, Laura Paule the assistant director who provided much needed artistic support, Bindlestiff's volunteer staff; Ed Mabasa, Darius Munoz and Dave Ragaza. Co-producer Melanie Elvena who helped push us to the finish line. The dedicated cast of Welga, thank you for your commitment and trust in the process. Finally, for the artistry and expertise of the design team: Joyce Manalo, Ava Tong, Andrea Almario, Rhoda Gravador, Dave Ragaza, Josh Icban and Sammay Dizon.

Aureen B. Almario
Artistic Director of Bindlestiff Studio
Director of WELGA

Playwright's Statement

WELGA's journey began as my MFA Thesis under Roy Conboy at SFSU in 2014. The play led me to an event called Destination Delano where Johnny Itliong spoke from the heart about his father and his work. It was here where, I first breathed in the Central Valley's history, struggle, and resilience of the agricultural workers of AWOC and NFWA. This school "project" led me to taking classes from Philip Vera Cruz's "right hand man" Sid Valledor to get personal accounts of Manong Larry Itliong and the other



(from Mark Day's, "Forty Acres: Cesar Chavez and the Farm Workers" 1971)

Manongs who laid the path for agricultural laborers in America. In 2015, WELGA took it's first steps on the Bindlestiff stage in the Stage Reading Series, AMOK. Shortly afterwards, under Anne Galjour with the Direction by Esperanza Catubig, the full-length play was presented as a Stage Reading as part of SFSU's Greenhouse Festival at the Z Below Theater.

I've always known I wanted to write a play as a tribute to the ones who began the 1965 Delano Grape Strike, but it wasn't until earlier this year when Oliver Saria and Aureen Almario approached me to have WELGA as a Mainstage Production, when I also wanted to honor the work of the community of workers currently fighting for their rights here in San Francisco. Our community partners of Migrante SOMA/TL and APALA were so instrumental with their partnership and advise. This gratitude also extends to Dan Gonzales and Dawn Bohulano Mabalon for their notes regarding the Grape Strike.

As much as this play is about community, I am beyond grateful for the community it took to create what you are seeing today. By being a part of our audience, please know that you are also a part of this community ... and our WELGA family.

Conrad A. Panganiban
Playwright

Biographies



Aureen Almario (Director) is an educator and artist. Currently the artistic director of Bindlestiff Studio, she has volunteered, produced, directed, acted, written in numerous productions for Bindlestiff Studio in the past 13 years. Her past performances include Hermia in *PINOY MIDSUMMER* and Theresa in Ray Pamatmat's *THUNDER ABOVE DEEP BELOW*. Aureen has performed on stage with FOB Troupe, Revival Arts Production, the Movement, and Pinays Maintaining Sisterhood Through Arts (PMSTA) and directed for Bakla Show. She studied stand-up comedy with Kevin Camia, shadow puppetry with Lorna Chui Velasco, and puppetry/visual theater with Ramon Abad, and recently trained with Li Leng Au in directing. She is the co-founder of the all-female sketch comedy troupe Granny Cart Gangstas. Currently in an international production for *FEATHERS OF FIRE*, a shadow play by Hamid Rahmanian based on the Persian epic *Shanameh*, she will be coming full circle this November in her final production of the show back home in SF. Shout out to my family, friends, and students who came out to the show.



Marissa L. Ampon (Carmelita) is ecstatic to debut in her very first theater production. Her performance experience comes from high school color guard/winter guard competitions, performing hip hop, traditional Pilipino dances, and singing with the choir in PCNs @UCDavis, and performing and competing with Manuia Polynesian Revue for three years. Voice acting and acting training with Voice One, Bay Area Acting Studio, and various acting coaches. She completed the Bindlestiff Stories High XVII Acting Workshop this summer with "the end-goal to audition & hopefully get a part" and she did, but Aureen Almario got to her heart first by offering her a role as Carmelita based on her cold reads at the Acting Workshop! Born and raised in the "Salad Bowl of the World", Salinas, CA aka John Steinbeck Country, she remembers her Uncle Tomas, who was a retired Pilipino Farm Labor Contractor in Salinas, who married her dad's auntie and helped bring her dad from The Philippines to Salinas in 1965. Maraming Salamat to my parents, my siblings, Jocelyne Ampon for telling me about the workshop =), my soul sister, Andrea R. Reed and my encouragers & supporters in my artistic journey. Instagram: @ampontheair

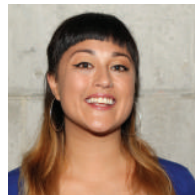


DC Fernandez (Dallas/Carlos) made his Bindlestiff debut earlier this year in The Love Edition: Time After Time, appearing in Conrad Panganiban's play, *OUR LAST DANCE*. Doy's other recent credits include Broadway By the Bay's *MISS SAIGON* and *LES MISÉRABLES*. He studied acting, music and voice at Stanford, and was musical director of Mixed Company a cappella and CARA award winner. Offstage, Doy is a leadership/communication instructor and coach. His goal is to help others bring out their voice and authentic leadership presence. He dedicates his performance to Mom & Pop, who gave him the courage to always do the right thing.



Lorenz Angelo Gonzales (Johnny) is a Filipino-American actor, director, musician, & activist based in the SF Bay Area. He is grateful to make theatre again with Bindlestiff Studio where he has been fortunate to grow as an artist, along with other Filipino artists in the space. He first joined Bindlestiff as a young actor in 2011 and has been a part of the theatre as an artist ever since. Theatre credits include: *THE IMPORTANCE OF BEING EARNEST* (Actors Ensemble of Berkeley), *TAGALOG* (Bindlestiff Studio), *SHORTLIVED VI* (PianoFight), *WELGA* (workshop - SF State's Greenhouse Festival), *WEST SIDE STORY* (YMTC) and *A MIDSUMMER NIGHT'S DREAM* (UC Berkeley). He is currently on tour with New Conservatory Theatre Center's YouthAware program. Lorenz received a BA in Theatre & Performance Studies and Ethnic Studies from UC Berkeley. He also has trained at American Conservatory Theatre and Berkeley Repertory Theatre. When not on stage, Lorenz works as a communications and community manager with Playwrights Foundation, and as a freelance portrait & wedding photographer.

Follow his various projects on instagram & twitter: @lorenzangelo. Visit lorenzangelo.com



Nicole Nutterfield (Janae) is a San Francisco native, her passions for social justice and performing arts began at a young age. Her early dance training began under the guidance of local ballet artist, Shan-ye Poon, Artistic Director of the Shan-ye Poon Creative Arts School. Nicole then went on to receive further training through Elvia Marta at the Ruth Asawa School of the Arts, where the dance curriculum allowed her to experience training under instructors and choreographers associated with Alonzo King *LINES* Ballet and ODC Dance Commons, here in San Francisco. Her exposure to the importance of education and her familiarity with the University of San Francisco and what it had to offer, naturally motivated her to pursue her degree at this university. She was able to collaborate with guest choreographers such as Christy Funsch, Jo Kreiter, Christian Burns, Sydney Loyola, and Charles Slender-White. She has continued her passion for activism through collaborations with Sean San Jose of CAMPO SANTO (*H.O.M.E*) and director/playwright Paul Flores and co-director Eric Reid through *LOCO BLOCO (ON THE HILL: I AM ALEX NIETO)*. She is proud and beyond excited to be a part of *WELGA* for her Bindlestiff debut!



Aaron Orpilla (Rex/Pete) This is A-ron's first production here at Bindlestiff Studio. Born and raised in Hayward, California, A-ron found his love for musical theater at James Logan high school. He was involved in his school's choir program and was casted in several musical productions. After an eight-year hiatus, he returned to the stage starring in San Francisco State University's Pilipino Cultural Night: *Ingat (Take Care): The Musical*, where he rediscovered his love for performing. A-ron is a recent graduate of SFSU with a Bachelor's degree in Communication Studies. He is currently an educator with Pin@y Educational Partnerships (PEP) at Balboa High School and is passionate about supporting youth from different communities in San Francisco. A-ron hopes to continue his work in education, incorporating theater into the classes that he teaches. He is excited to see what future holds for him in theater and at Bindlestiff Studio. A-ron would like to thank everyone that has supported him

throughout the years: Mom, Pop, Manong Ronnie, his BFF's Michelle and Rino, PEP, the cast and crew for giving him the best first experience at Bindlestiff, and his partner Arman. I love y'all very much! Enjoy the show!



Ely Sonny Orquiza (Arno) is proud to be performing at Bindlestiff Studio again after having done *NANAY'S LULLABY* for National Queer Arts Festival in 2016. He is a multidisciplinary actor and teaching artist based in San Francisco Bay Area. He is the Founder and Artistic Director of the Projector Room Play Readings Ensemble, an indie theatre troupe committed to uplift and introduce queer and multiethnic voices onstage. He has previously worked on the world premiere of *ETHOS DE MASQUERADE* as part of the production team with Campo Santo at ACT Strand's The Rueff. Favorite theatrical credits include *A MIDSUMMER NIGHT'S DREAM* (Inferno Theatre), *RAMEAU: TEMPLE OF GLORY* (Cal Performances), and *REENTRY: PROCESS OF RESILIENCE* (Joe Goode's Resilience Project). He has previously worked on TV commercials for Uber, Under Armour, SF Giants, Citizen and Playstation Latin America. Ely holds a BA in Theater and Performance Studies from the University of California, Berkeley. Follow his upcoming projects on Instagram @TheOrquiza. To all my strong network of support: maraming salamat po.



Laura Priscilla Paule (Assistant Director) is a community artist and arts administrator currently working at Asian Pacific Islander Cultural Center (APICC). She saw her first Bindlestiff show in 2014 with Pinoy Midsummer and she hasn't left home since. After directing several short plays and producing the short-play festival The Love Edition: Time After Time, she is elated to be assistant directing Welga under the fantastic leadership of Aureen Almario. Many thanks to Conrad Panganiban for creating the words and worlds of our play, to our crazy talented cast and crew, and to the movement makers who inspired this play and continue to inspire us in our daily lives.



Conrad A. Panganiban (Playwright) is a Bay Area playwright. His first written play was a PCN for Sac State. Since then his plays, which specifically feature Filipina/o characters, have been produced throughout the United States and Internationally. In 2015, his commissioned play, *ESPERANZA MEANS HOPE*, by My Sister's House--a non-profit organization serving domestic violence survivors of the Asian American Community of Sacramento, CA--has been performed at Sacramento City College, UC Davis, CSU, Sacramento, and SFSU. Awards: *NEW AMERICAN ORDER* - Official Selection for SF Playhouse's Words Rising Reading Series; *INAY'S WEDDING DRESS* - Winner: James Milton Highsmith Award; *THE BARBARY CAPER* - First Place: Playwrights CageMatch Script Competition (Douglas Morrisson Theatre); and *PRINSESA* (with Drew Stephens and Emmanuel Romero) - Outstanding Writing (Scary Cow Film Festival). He is a member of Theatre Bay Area (TBA), Theatre Communications Group, and the Dramatists Guild of America. In 2017, he was a member of TBA's ATLAS Program for Playwrights. Conrad has a Creative Writing MFA with an emphasis on Playwriting from San Francisco State University. For E. and Bitoy. NEVER GIVE UP.



Krystle Piamonte (Vanessa) is a Bay Area-based actor and model who is excited to return to the Stiff for the world premiere of Welga! She studied theatre with a concentration in musical theatre at Sacramento State University. Most of her performance arts training and experience comes from her 12 years with Sacramento's Sinag-tala Filipino Theater & Performing Arts Association, where she last served as its Assistant Director and as one of its Resident Choreographers. Some of her favorite stage credits include: *BAT BOY*, *THE WIZ*, *NUNSENSE*, *AT THE BALLET II*, *ESPERANZA MEANS HOPE*, *STORIES HIGH*, and *BAGYÓ*. Favorite screen credits include: French Fried, Vampariah, When We Rise, Sisterly Love, Sorry to Bother You, Sense8, and Bookstore. You can catch Krystle next in *KING FOR A DAY*, a short play in Left Coast Theatre Company's anthology production, The Morning After (another world premiere production!). Thankful for the cumulative balance of energy from her spunky and funky Welga family. For Grandma & BJ always. To view her resume, reel, portfolio, and all upcoming projects, visit Krystle's website: www.krystlepiamonte.com. Instagram: @xLe. ISANG BAGSAK!



Ava Tolentino (Maxi) is ecstatic to be part of Bindlestiff. She was born in the Philippines and raised in the East Bay. She was shy as a little girl, and she never imagined she'd be an actor one day. She recently completed Contemporary Drama at the Royal Academy of Dramatic Arts in London under dramaturg Lloyd Trott with professors Jane Bertish (acting), Juri Nael (movement), and Zabrad "Budgie" Salam (voice). Before going to London, she studied theater at Shelton Theater with Matt Shelton, A.C.T. with Drew Khalouf and Waterfront Playhouse with Rachel Adler, as well as TV and Film acting at First Take with Nancy Berwid and Hollywood film director, Katt Shea. She has worked with both Bay Area, and Los Angeles based Independent filmmakers. She would like to thank her partner and love of her life, Russell Whitelock for believing in her and encouraging her to pursue her dreams.

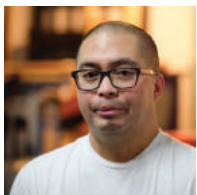
IMDB: <http://www.imdb.me/ava.tolentino> | Facebook: Ava Tolentino | IG: @ava.tolentino



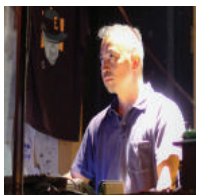
Adisorn Wannaviroj (Fernando) was inspired to become an actor at the age of 10, when he first laid eyes on a commercial of Disney stars attempting to draw the Mickey Mouse logo. His journey didn't begin until Sophomore year of high school at the age of 16, when he first took a Drama class and discovered his love for Theatre. His parents enrolled him in Kids On Camera, a school focused on teaching students the art of TV & film acting, modeling and voiceovers. He spent a year learning different crafts which exposed him to a variety of paths to pursue in the world of performing arts. In 2012, as a Senior in high school, he made his first debut in a *CINDERELLA ONE ACT*. After graduation, Adisorn went to City College of San Francisco in 2013, where he took more theatre courses and got casted as the I.R.S. Agent in the play *YOU CAN'T TAKE IT WITH YOU*. He transferred to San Francisco State University in 2015, majoring in Criminal Justice Studies and Political Science in hopes of becoming a Lawyer, but continued to take Theatre courses to hone his craft.



Melanie Elvena (Co-Producer) is an arts producer and curator creating cultural programs all over the San Francisco Bay Area whose goal is to connect creatives, support artists, and build community along the way. This is her second show as a producer at Bindlestiff Studio (her first being The Love Edition: Time After Time), where she's thankful for the opportunity to tell authentic stories and create with others in the Filipino community. Her acting credits include: Lily in 18 (Stories High XV), Sarah in 27 Varieties (The Love Edition: Always & 4ever), Miranda in The Sunshower Bride (The Love Edition: Always & 4ever), Julie in I Love You, Mariah (Stories High XVI), and FlashPlays! 2016 (Bay Area Playwrights Foundation). This September, Melanie made her directorial debut with Sounding Heartbeats (Stories High XVII). Congratulations to the cast and crew of Welga for an amazing production that honors our history and shows us the power of our dreams.

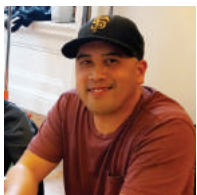


Ed Mabasa (Stage Manager) Is presently Bindlestiff's house manager, default stage manager, and an introverted diabetic who reads books on the Mongolian empire in the dead of night.



Darius Munoz (Technical Director) A broadcast engineer and content producer at Stanford University by profession but a musician and music lover at heart. Darius' early work with Bindlestiff came as volunteer stage assistant during music festivals. The experience made it possible to work various night clubs and theatres throughout San Francisco as a sound engineer.

Darius is the typical "tech", often repairing damaged equipment or car repairs or just "geeking out" on the newest piece of audio gear. The field of technology is his specialty, particularly audio/visuals.



Dave Ragaza (Lighting Director/Board Operator) Dave has worked on most of the shows at Bindlestiff since 2012. He'd like to thank Oli, Darius, Ed, Laura, Conrad, Sammay, Josh, Joyce, Ava, and the whole cast of Welga for all of their hard work.

Huge Love to Aureen for her passion, her big heart, and laughing with me all the time.

Special thank you to the following people and organizations!

Bindlestiff Studio's Board of Directors, Asian Pacific American Labor Alliance, Migrant SoMa/TL- San Francisco, YOHANA - Youth Organizing Home and Neighborhood Action of the South of Market Community Action Network (SOMCAN), Dan Gonzales, Dawn Bohulano Mabalon, Jaki Joanino, Johnny Itliong, Sid Valledor, Joe Cascasan, Patrick Silvestre, and Jack Patena,

Follow the Fields music and lyrics by conrad a. panganiban

CHORUS
I'll follow the fields
Back to where you are
Where you grew all your dreams
From afar

With the strength and the courage
In a land not your own
You stood up for justice
To make this your home
When you followed the fields

VERSE 1
Dreams, were all that you ever knew
When you, left home without a clue
About, this land paved streets of gold
Believing in everything you were told

About being free
About having equality
Without running away
You stood your ground, fought back and stayed

REPEAT CHORUS

VERSE 2
Brown, your hands crack into the soil
In heat, that felt like your blood would boil
Inside, your heart trembled on its own
But in fighting together, you've always known

About being free
About having equality
Without running away
You stood your ground, fought back and stayed

BRIDGE
Now, the hour has come
To remember all that you've done
You have given us all that you've had
And it's our turn to pay tribute back

So, i'll follow the fields
Back to where you are
Where you grew all our dreams
From afar

With the strength and the courage
In a land not your own
You stood up for justice
To make this our home
So, i'll follow the fields
I'll follow the fields
I'll follow the fields



From our Family to Yours.

Inay Filipino Kitchen
(inside the Metreon - corner of 4th St and Mission)
135 4th St San Francisco, CA 94103
T: 415-227-4629
email: InayFilipinoKitchen@gmail.com
visit: www.inayfilipinokitchen.com



UPCOMING EVENTS

MUMU, an otherwise experience.

October 27 - November 18

Bindlestiff Studio

<https://mumu-sf.com/>

Bindlestiff Studio

Year End Celebration

December 2, 2017, 3pm - 5pm

Social Kitchen

1326 9th Ave, San Francisco, CA 94122

<http://bindlestiffstudio.org> for more info

Bindlestiff Studio Wishlist

SUPPORT THE ONLY FILIPINO AMERICAN PERFORMING ARTS SPACE IN THE NATION!

STORAGE

Cardboard Storage Box with Lift-off Lid
Letter/Legal (10"W x 12"H x 15"D)
Flip-top Tote 12" gallon plastic storage bin
Industrial Shelving (various sizes)
Archival Art Portfolio 24"H x 36"W x 3"D
Safe 2.0 cubic feet with digital lock

OFFICE

A Mac Keyboard
Canon 104 blank ink cartridge (or generic version)
Binderclips (various sizes)
3-ring Binders w/ at least a 2" spine (for scripts)
File Folders
Hanging Folders

CLEANING / BATHROOM

Marathon Brand C-Fold Paper Towels
33 gallon trash liners
13 gallon trash liners
Toilet Paper
Handsoap Refill (64 fl oz.)
Clorox Wipes
Latex gloves
Pushbroom
Commercial Broom
Commercial Mop Head refill
Commercial Mop Bucket w/ Wringer
Gallon-size Pine Sol

MISC

Black Gaffer Tape
Black Zip Ties
Glow Tape

If you would like to donate any of the items in our wishlist, send us an email info@bindlestiffstudio.org.